



NAIKE SQUARE

**EUROPEAN
WARRANTY**

MATERIAL:

- Frame collector in painted mild steel 30x30 mm.
- Horizontal heating elements in painted mild steel 15x20 mm.

FIXING KIT:

Brackets, airvent, hexagonal tool, plugs and screws for mounting suitable for use on compact or hollow brick, user notice.

The kit is certified from TÜV in compliance with VDI 6036 - class 4.

PACKAGING:

Carton angular and profiles protected by a recyclable film in polyethylene. User notice included.

PAINTING PROCESS:

Painted with ecological epoxy powders (Certificate DIN 55900-1,-2).

COLOURS:

See colour chart.

ACCESSORIES:

For the complete list, please refer to the accessories chapter.

AVAILABLE FUNCTIONS:

- Hot water
- Dual energy

P. max: 8 bar

Functioning: hot water

T. max: 110° C

Connections: n° 2 x 1/2" G - 1 x 1/2" G

CERTIFICATES



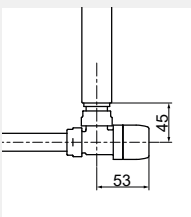
ACCESSORIES



Kristal valve square with thermostatic option white R01

Copper conn. Ø 12/14/15
Art. nr. 5991990311161

Multilayer conn. Ø 16
Art. nr. 5991990311160



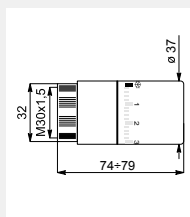
Quotes for square Kristal valves with thermostatic option



Thermostatic head white

(Kit 2 pieces)

Art. nr. 5035270710016



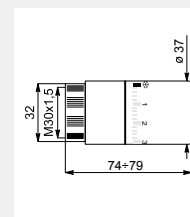
Thermostatic head quotes



Thermostatic head chromed

(Kit 2 pieces)

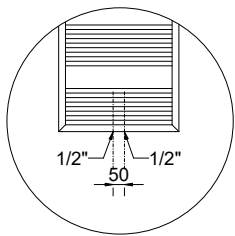
Art. nr. 5035270710015



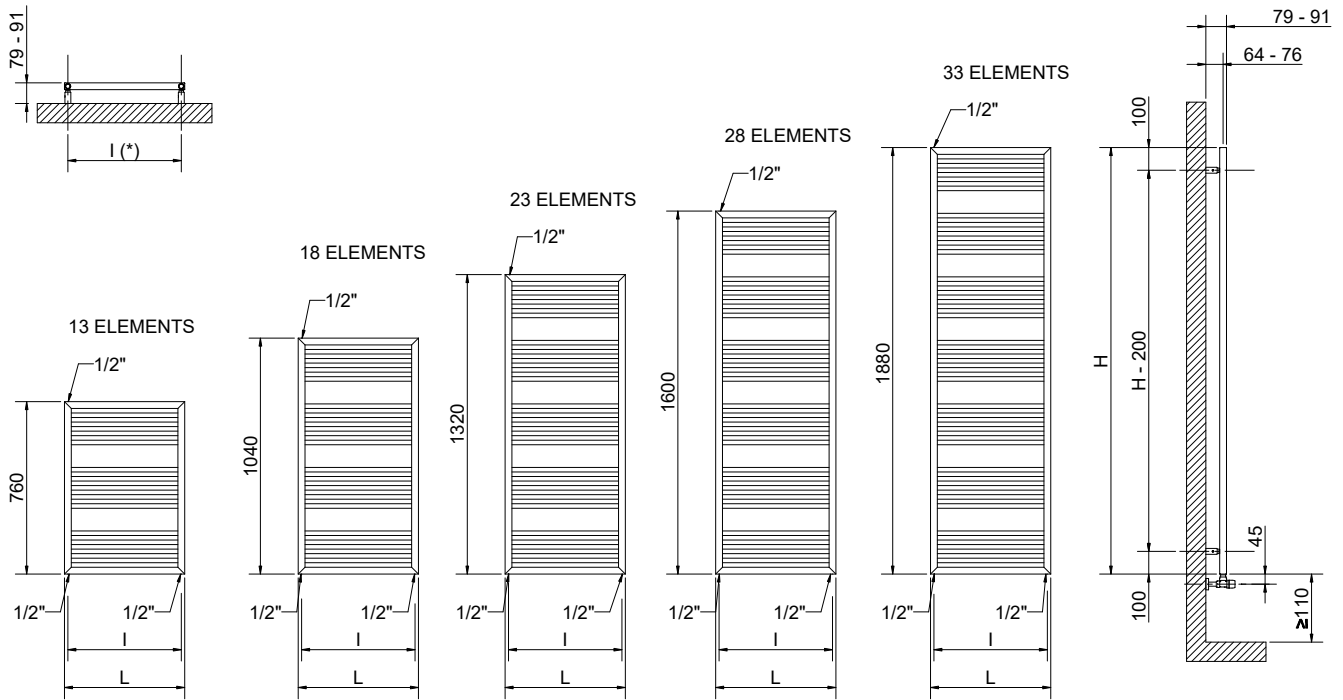
Thermostatic head quotes

If ordered separately from the radiator, the accessories are available in standard white only

Art. nr. are referred to colour WHITE R01



Detail of the pipe centres 50 mm version



(*) The fixing kit has the same pipe centre (l) as the radiator

Quotes for Kristal valves

NAIKE SQUARE

Height [mm]	Width L [mm]	Pipe centres l [mm]	Art. nr.	Pipe centres 50 mm		Thermal output [Watt]					Dual energy kit [Watt]
				Art. nr.	Dry Weight [Kg]	Surface [m ²]	Water content [lt]	Δt=50°C	Δt=30°C	Exp. n	
760	480	450	3551826102021	3551826102029	7,00	0,60	2,90	333	176	1,2458	300
	530	500	3551826102025	3551826102033	7,60	0,65	3,10	361	191	1,2443	300
	580	550	3551826102005	3551826102015	8,20	0,70	3,40	389	206	1,2421	400
1040	480	450	3551826102022	3551826102030	9,20	0,80	00,00	444	236	1,2357	400
	530	500	3551826102026	3551826102034	10,00	0,85	4,00	486	259	1,2318	500
	580	550	3551826102006	3551826102016	10,80	0,92	4,30	528	282	1,2279	500
1320	480	450	3551826102002	3551826102012	11,40	0,97	4,60	563	298	1,2446	500
	530	500	3551826102004	3551826102014	12,40	1,05	4,90	612	325	1,2380	600
	580	550	3551826102008	3551826102018	13,30	1,14	5,20	661	352	1,2315	600
1600	480	450	3551826102023	3551826102031	13,70	1,16	5,50	644	338	1,2635	600
	530	500	3551826102027	3551826102035	14,80	1,26	5,80	699	367	1,2621	700
	580	550	3551826102009	3551826102019	15,90	1,36	6,20	755	397	1,2567	700
1880	480	450	3551826102024	3551826102032	15,90	1,35	6,30	749	396	1,2486	700
	530	500	3551826102028	3551826102036	17,20	1,46	6,70	810	429	1,2454	700
	580	550	3551826102010	3551826102020	18,50	1,57	7,10	871	462	1,2432	900

Art. nr. are referred to colour WHITE R01

For output at different ΔT, please refer to the following formula: desired output = output at ΔT 50 x (desired Δt/50)ⁿ