



WINDOW®

design **Beatrice De Sanctis**

MATERIAL:

Heating body and handle in ultra-thin painted carbon steel.

FIXING KIT:

Brackets, airvent, hexagonal tool, plugs and screws for mounting suitable for use on compact or hollow brick, installation notice.
The fixing kits are compliant with VDI 6034 norm, class 4.

FEATURES:

The exclusive design of the Window towel warmer combines aesthetics and functionality.

The heated handle can be extracted, acting as support for warming the towels. The opening and closing of the handle are manually operated. Window has been designed to offer maximum comfort of use by differentiating the temperature of the handle from that of the body.

The temperature of the handle is kept lower than that of the radiator body, so to allow a safe grip without sacrificing the maximum heat output provided by the radiator body at the normal operating temperatures of the heating system.



5 YEARS WARRANTY

VALVE KIT INCLUDES:

Squared kit valve including chromed thermostatic head
Fittings for copper pipe (Ø 12/14/15)
Fittings for multilayer pipe (Ø 16 x2)

PACKAGING:

The radiator is protected with a film in polyethylene and cardboard box. Use and maintenance notice included.

PAINTING PROCESS:

Painted with ecological epoxy. (Certificate DIN 55900-1,-2). Thermal outputs certified in accredited laboratories in compliance with European norm EN442.

COLOURS:

Radiators and accessories: standard white R01 colour.
For other colours see colour chart.
For the two-color versions the price is shown in the table.

P. max: 5 bar

T. max: 110° C

Available for central heating systems

Connections: n° 2 x G 1/2" - n° 3 x G 1/8"

PRODUCT CERTIFICATES



AWARD

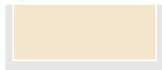


reddot winner 2022



BICOLOR

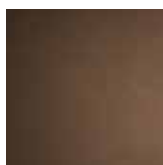
BODY



FRAME



F30
WHITE SAND

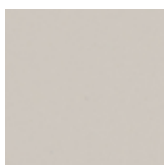


F36
TERRA

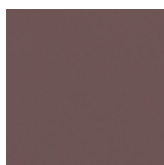
BODY



FRAME



T20
WHITE GREY

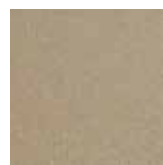


T17
ACAI MATT

BODY



FRAME

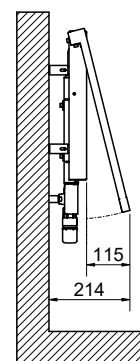
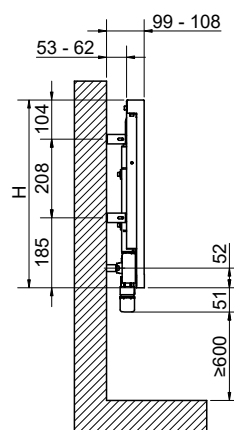
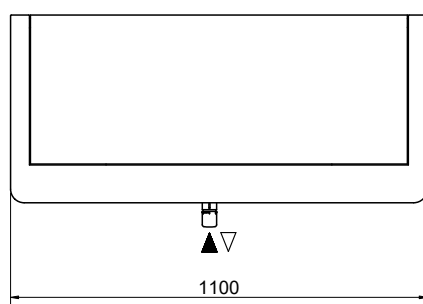
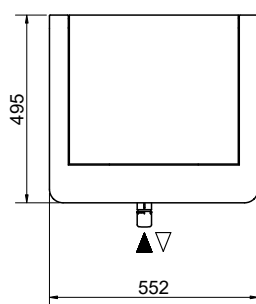
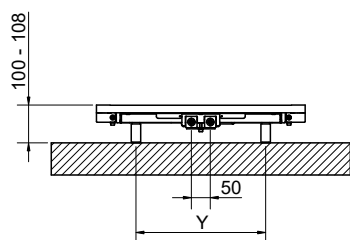
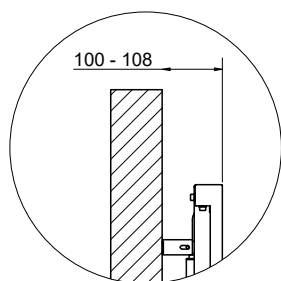


F25
QUARTZ DUST



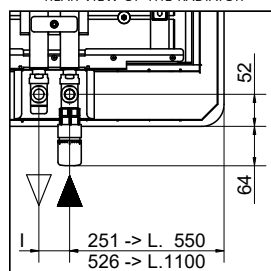
F23
SPARKLING GREY

Available color combinations.



Inlet flow must be set on the left connection, so to guarantee the correct functioning of the radiator.

Connection detail's on the
REAR VIEW OF THE RADIATOR



H [mm]	L [mm]	Y [mm]
495	550	343
495	1100	893

WINDOW®

Art. Nr.	Height		Width	Pipe Centres	Dry Weight	Surface	Water Content	Thermal output Watt		Exponent n
	H [mm]	L [mm]						$\Delta t = 50^{\circ}\text{C}$	$\Delta t = 30^{\circ}\text{C}$	
3551426102001	495	550	50	14,1	0,6	1,4	258	147	1,10347	
3551426102002		1100	50	22,4	1,15	2,6	519	285	1,17159	

Art. Nr. are referred to WHITE R01 colour version.

WINDOW® BICOLOR

Art. Nr.	Colore		Height	Width	Pipe Centres	Dry Weight	Surface	Water Content	Thermal output Watt		Esp. n
	BODY	FRAME							H [mm]	L [mm]	
3551426102003	F30	F36	495	550	50	14,1	0,6	1,4	258	147	1,10347
3551426102006				1100	50	22,4	1,15	2,6	519	285	1,17159
3551426102004	T20	T17	495	550	50	14,1	0,6	1,4	258	147	1,10347
3551426102007				1100	50	22,4	1,15	2,6	519	285	1,17159
3551426102005	F25	F23	495	550	50	14,1	0,6	1,4	258	147	1,10347
3551426102008				1100	50	22,4	1,15	2,6	519	285	1,17159

For output at different Δt than 50°C , please refer to the following formula = desired output = output at $\Delta t 50^{\circ}\text{C} \times (\text{desired } \Delta t / 50)^n$